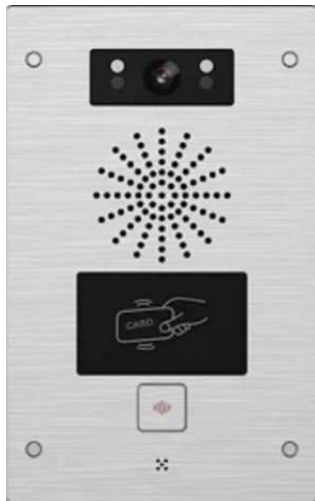




PM Power Products

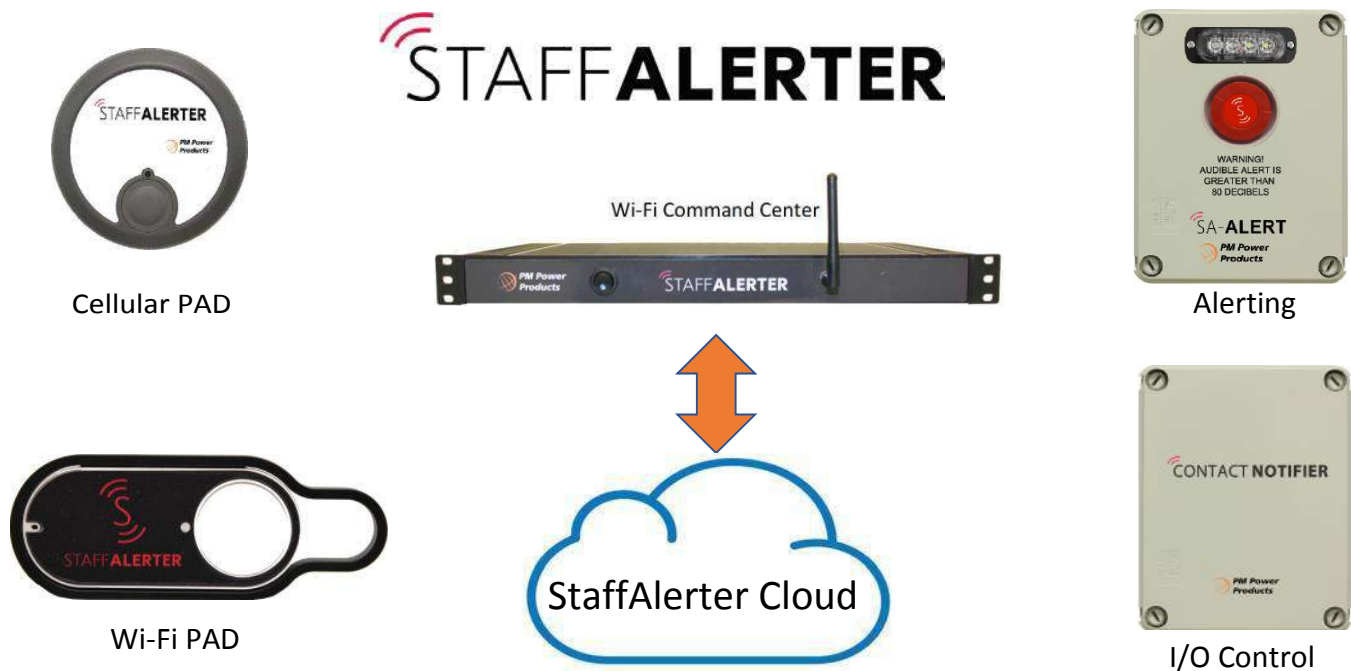
Product Catalog

December 2019



For Sales Support Call 614.652.6509 or sales@pmpowerproducts.com

Take Control of Your Facility



What makes StaffAlerter better than the current Emergency Notification Systems? StaffAlerter provides three layers of command and control consisting of:

Physical Layer

The StaffAlerter appliance is located on the premise and connected to wi-fi or cellular networks process direct physical inputs from devices or people in the facility. These events activate custom rules managed by the customer which are designed to send alerts to staff, control outputs as needed and communicate to other StaffAlerter appliances located on the network.

Web Control Layer

Custom URL portal allows customers to create and manage Web Action Keys® which can be activated by any device that can be reached over the web.

Cloud Layer

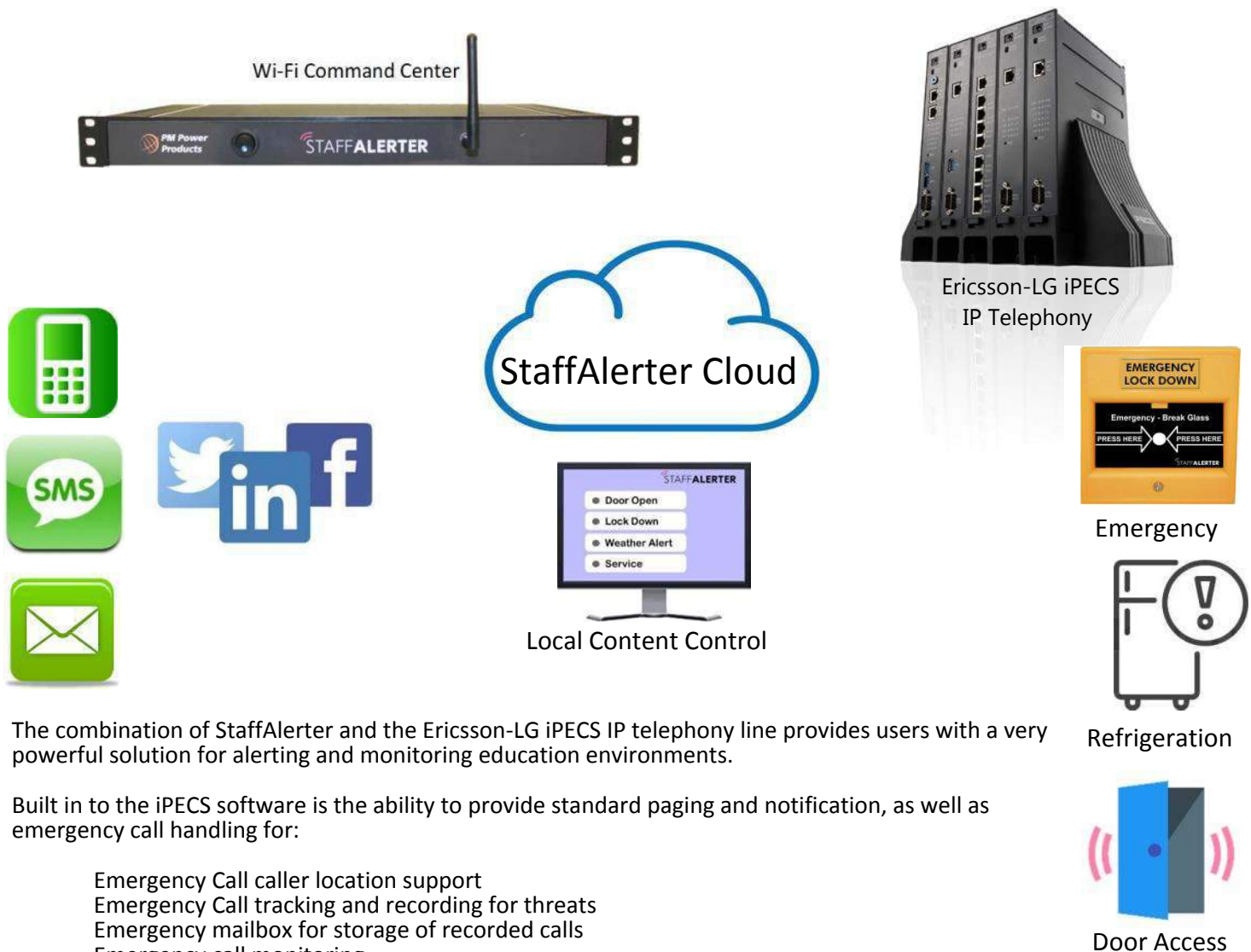
Designed with ultimate survivability in mind, Cloud Action Keys® are user created and controlled, allowing messages to be sent to users or groups, even during facility system failure, this capability allows StaffAlerter to be on duty 24/7 regardless of facility status.

Only StaffAlerter combines all these functions into one easy to manage, easy to deploy system capable of serving a small site with a small group of contacts through an enterprise of any size or spread across any region from a single Web Portal.

StaffAlerter was designed to operate in any condition and with any level of network access including a cellular option. Power failures, network outages or regional disasters won't leave you without the ability to communicate based on the Cloud Layer.

For Sales Support Call 614.652.6509 or sales@pmpowerproducts.com

STAFFALERter With iPECS



The combination of StaffAlerter and the Ericsson-LG iPECS IP telephony line provides users with a very powerful solution for alerting and monitoring education environments.

Built in to the iPECS software is the ability to provide standard paging and notification, as well as emergency call handling for:

- Emergency Call caller location support
- Emergency Call tracking and recording for threats
- Emergency mailbox for storage of recorded calls
- Emergency call monitoring
- Emergency paging with prerecorded announcements - will override busy stations
- SOS paging to all page zones with a single button press
- Safety alert - Off hook alerting with Help message
- Contact relays for buzzers and door access
- Interface to bell systems such as Bell Commander and Bogan PCM2000 paging systems

StaffAlerter is designed with the end user in mind for ease of message creation and delivery. Combined with the capabilities of the Ericsson-LG iPECS IP telephony system, StaffAlerter provides an extensive array of capabilities to integrate messaging and access control in the education environment. Using just a telephone, authorized StaffAlerter users can create and send a message in under 60 seconds following simple verbal prompts; recipients will receive text, emails or phone calls. Phone calls missed can utilize the replay feature by calling the alerting number that originated the message. Answering machine detection is also available.

For more information on StaffAlerter and what it can do for your education facility, contact PM Power Products to arrange a demo.

For Sales Support Call 614.652.6509 or sales@pmpowerproducts.com

EMG BB2U-24/20



Dual Battery Back-Up System for eMG80/800 and Vertical Summit Products

Designed for longer run time than a UPS system can provide The PM Power Products EMG-BBU2U-24/40 battery backup can supply up to 3 hours of operation after a power failure of the EMG80/800.

Designed to plug into the eMG80/800 or Summit KSU, the batteries are continuously charged by the eMG80/800 or Summit system. In the event of power loss, the batteries seamlessly supply power to run the failed system until power is restored.

The eMG800 can be mounted above or below the eMG BB2U-24/20 for ease of installation. Optionally, the EMG BB2U-24/20 can be used as a mounting shelf for the eMG80, saving the cost of a rack mount shelf. Supports the Vertical Summit products, too.

Protection is provided by a 10 amp in-line fuse the EMG BB2U-24/20 provides the longest run time in a cost effective compact package.

The EMG BB2U-24/20 is protected by a one-year warranty. The EMG BB2U-24/20 allows for easy battery changes in the future if needed. The system power cable routes out the back to the EMG system 24 VDC connector. The locking unit weight is 36 lbs., dimensions are 19" wide, 3.5" high and 13" deep. Includes (4) 10-32 and (4) 12-24 rack screws.



The design of the PM Power Products SDP-20S SIP Door Phone and the SVDP-30S SIP Video Door Phones are based on our experience and knowledge of IP phone development. The SDP-20S SIP Door Phone and the SVDP-30S SIP Video Door Phones use standard IP/RTP/RTSP protocol for voice transmission and enjoys the advantages of full SIP compatibility. The SDP-20S SIP Door Phone and the SVDP-30S SIP Video Door Phones have a variety of enterprise-level features and are compatible with the Ericsson-LG iPECS platforms eMG-80/800, UCP100/600/2400 and LIK-MFIM processors utilizing the 3rd Party SIP Extension license.

Standard SIP operation lends itself to use with most current IP PBX systems or in a standalone configurations using a SIP connection.

The SDP-20S SIP Door Phone and the SVDP-30S SIP Video Door Phones are designed for operation in indoor environments or protected areas. The robust mechanical construction offers protective coverage rating against dust and water (IP54). The SDP-20S SIP Door Phone and the SVDP-30S SIP Video Door Phones are an economical device with triple function (All in 1) Access control activated by call, passcode and/or RFID card or key FOB.

The PM Power Products SVDP-31S SIP Video Door Phone offers a next generation solution for entry control and video monitoring. The SVDP-31S combines IP technology with industry standards for access and physical security to deliver a system that improves communication for tenants, guests and visitors. The SVDP-31S flexibility, ease of use and simple installation makes it ideal for enhancing security in schools, offices and other public facilities.

The SVDP-31 SIP Video Door Phone is compatible with the iPECS UCS client video application.



SIP

The most popular and compatible standard protocol - SIP - enables delivery of worry free communication and connectivity.



Advanced Protection

Enclosure designed on International Protection (IP) markings to protect against intrusion – accidental or intentional - waterproofed to IP65 and anti-collision up to IK10.



HD Video

The 1280x720p (720p – progressive scan) camera produces vibrant high-quality HD video and captures motion effortlessly.



HD Voice

High definition voice using wideband G.722 coding produces clearer sound quality and extends the frequency range.



Noise Reduction

The embedded processing module reduces environmental noise and improves voice recognition up to 5 meters (approx. 16 feet).



Anti-tamper

Alarm sounds if/when cover is removed from the housing and reports the action to the control center.



Multi-function

The system is capable of performing multiple functions, i.e. video intercom and door phone and single device paging, and can be configurable with additional features.



Wide Range temperature adaptability

The system design adapts to operating under various environmental conditions and temperatures (supports temperatures ranging from -40 to +70 Celsius.)

The PM Power Products Video Door Call Security Package provides video and audio security and access control for up to two locations within a site. This package does not require a PBX and can work over an existing LAN.

The Video Door Call Security Package includes 2 SVDP-30S SIP Video Door Phones offering a next generation solution for door entry control and video monitoring. The SVDP-30S combines IP technology with industry standards for access and physical security to deliver a system that improves communication for tenants, guests and visitors. The SVDP-30S flexibility, ease of use and simple installation makes it ideal for enhancing security in schools, offices and other public facilities.



Highlights for SVDP-30S SIP Video Door Phone



SIP

The most popular and compatible standard protocol - SIP - enables delivery of worry free communication and connectivity.



Advanced Protection

Enclosure designed on International Protection (IP) markings to protect against intrusion – accidental or intentional - waterproofed to IP65 and anti-collision up to IK10.



HD Video

The 1280x720p (720p – progressive scan) camera produces vibrant high-quality HD video and captures motion effortlessly.



HD Voice

High definition voice using wideband G.722 coding produces clearer sound quality and extends the frequency range.



Noise Reduction

The embedded processing module reduces environmental noise and improves voice recognition up to 5 meters (approx. 16 feet).



Anti-tamper

Alarm sounds if/when cover is removed from the housing and reports the action to the control center.



Multi-function

The system is capable of performing multiple functions, i.e. video intercom and door phone and single device paging, and can be configurable with additional features.



Wide Range temperature adaptability

The system design adapts to operating under various environmental conditions and temperatures (supports temperatures ranging from -40 to +70 Celsius.)



SVP-X6 Enterprise IP Phone

Also included with the Video Door Call Security Package is the SVP-X6 Enterprise IP Phone. The SVP-X-6 is a high-end enterprise desktop phone provides a video interface to the 2 SVDP-30S Video Door Phones so users can see and communicate with persons requesting access to a facility.

Highlights for the SVP-X6 Enterprise IP Phone

- 2 DSS Key-mapping LCD – 12 DSS keys corresponded to the LCD display to provide dynamic DSS/BLF functions up to five pages at virtualized total 60 DSS keys.
- Gigabit Ethernet – 10/100/1000Mbps Ethernet with POE enabled
- Economic and Environmental Friendly design with high -resolution TFT color display delivering a rich visual experience.
- High Interoperability – Compatible with major platforms: Ericsson-LG iPECS, 3CX, Asterisk, Broadsoft, Elastix,

PoE Adapters

To complete the Video Door Call Security Package, 3 PoE adapters are included to ensure a smooth installation.



SVP-X6 Enterprise IP Phone

A New Enterprise Color-LCD Phone with Intelligent DSS Key-mapping LCD Display

The new SVP-X6 IP Phone is a high-end enterprise desktop phone which comes with 2 intelligent DSS Key-mapping color LCDs to increase enterprise users' productivity.

Highlights

- ✓ 2 DSS Key-mapping LCD – 12 DSS keys corresponding to the LCD display to provide dynamic DSS/BLF functions, soft mapping up to five pages with a total of 60 DSS keys.
- ✓ Gigabit Ethernet – 10/100/1000Mbps Ethernet with POE enabled.
- ✓ Economic and Environmental Friendly design
- ✓ High-resolution TFT color display, delivering a rich visual experience.
- ✓ High Interoperability – Compatible with major platforms: Ericsson-LG iPECS, 3CX, Asterisk, Broadsoft, Elastix, Zycoo, etc.



Generic

- 6 SIP Lines
- HD Voice
- Support receiving Video call
- POE Enabled
- 3 LCDs (Main + DSS)
- Handset(HS) / Hands-free(HF) / Headphone(HP) mode
- Intelligent DSS Keys
- Optional External Power Supply
- Industrial Standard Certifications: CE/FCC

Call Features

- Call out / answer / reject
- Mute / Unmute (microphone)
- Call Hold / Resume
- Call Waiting
- Intercom
- Caller ID Display
- Speed Dial
- Anonymous Call (Hide Caller ID)
- Call Forwarding (Always/Busy/No Answer)
- Call Transfer (Attended/Unattended)
- Call Parking/Pick-up (depending on server)
- Redial
- Do-Not-Disturb (per line / per phone)
- Auto-Answering (per line)
- Voice Message (on server)
- Local 3-way Conference
- Hot Line
- Hot-Desking

Phone Features

- Phonebook (1000 entries)
- Remote Phonebook (XML/LDAP)
- Call log (1000 entries, in/out/missed)
- Black/White List Call Filtering
- Screensaver
- Voice Message Waiting Indication (VMWI)
- Programmable DSS/Soft keys
- Network Time Synchronization
- Support Bluetooth headset (Through USB Dongle BT20)
- Support Plantronics Wireless headset (Through Plantronics APD-80 EHS Cable)
- Support Recording (Through Flash Drive)
- Action URL / Active URI
- CSTA

Video

- Video codec: H.264
- Video call resolution: QCIF / CIF / VGA

Audio

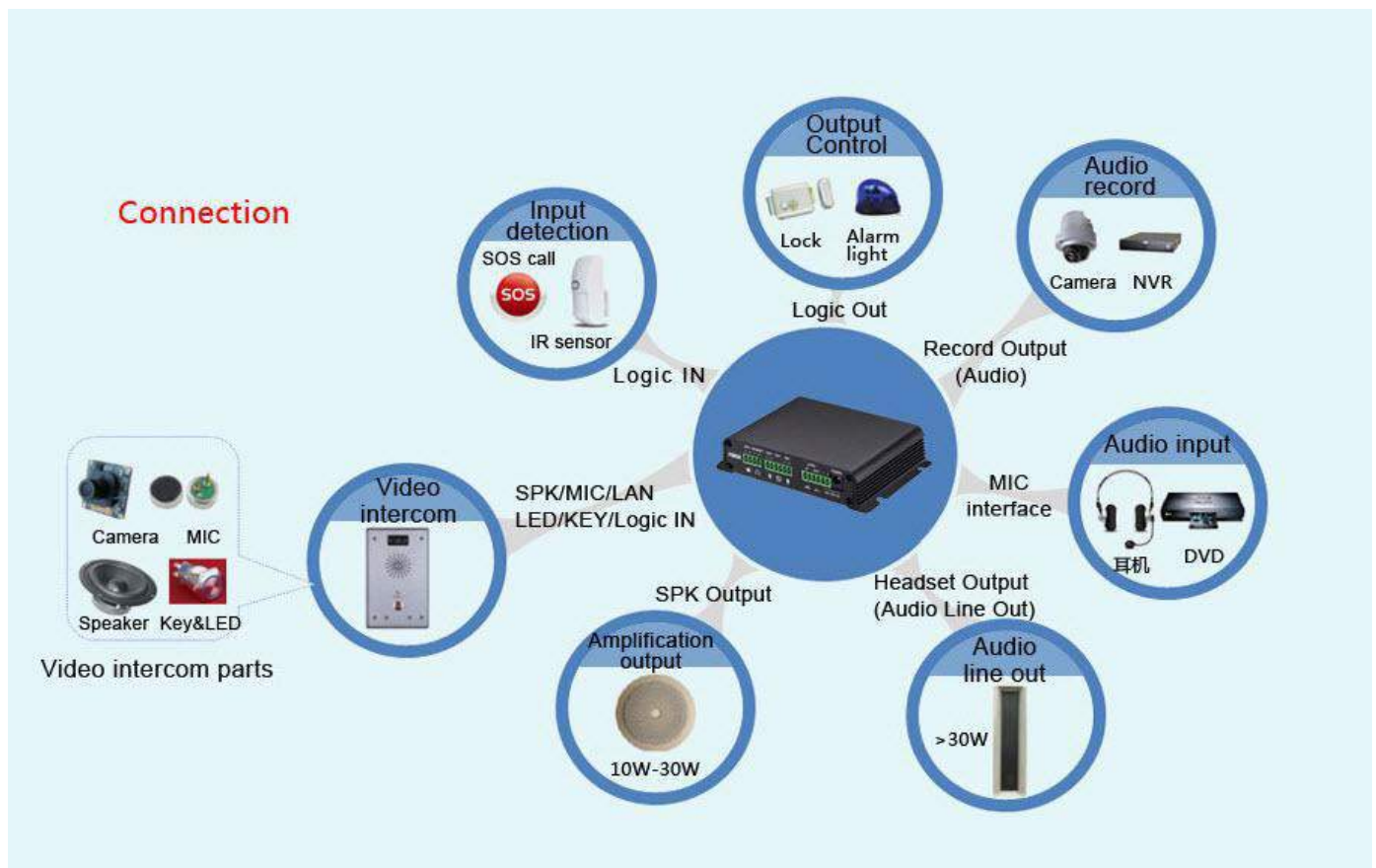
- HD Voice Microphone/Speaker (Handset/Hands-free, 0 ~ 7KHz Frequency Response)
- Wideband ADC/DAC 16KHz Sampling
- Narrowband CODEC: G.711a/u, G.723.1, G.726-32K, G.729AB, AMR, iLBC, Opus
- Wideband CODEC: G.722, AMR-WB, Opus(16KHz)
- Full-duplex Acoustic Echo Canceller (AEC) – Hands-free Mode, 96ms tail-length

PA2-AMP-S SIP VIDEO INTERCOM & PAGING GATEWAY

PA2-AMP-S is a SIP video intercom and paging device for industry applications. The media stream transmission utilizes standard IP/RTP/RTSP protocols. It is perfectly compatible with all the current SIP IPPBX /IMS platforms, such as Ericsson-LG iPECS, Asterisk, Broadsoft, 3CX, Elastix, etc. It has various functions and interfaces, such as Intercom, broadcast, video , security, and recording to adapt to different application environments.

Highlights

- ✓ Small form factor
- ✓ Emergency call button interface, active call
- ✓ Interact with IPC camera, you can make a video phone call
- ✓ NVR video recording, standard RJ45 interface
- ✓ Recording output, 3.5mm standard audio interface
- ✓ 10W-30W adaptive output power
- ✓ System online management and upgrade



Add Redundant Power With Alarm Reporting to iPECS-LIK/UCP Systems

Reliability is a fundamental prerequisite for today's IP based telephony systems. Redundancy offers the peace of mind of knowing your system will continue to operate in the event of a component failure. The power supply is the heart of any system.



RPS-48V1.25

Your system depends on a reliable supply of power to operate, but most of today's systems offer only a single power supply. Adding a second supply is rarely an option or adds a large expense to the design. The RPS offers a breakthrough in highly reliable redundant system power.



RPS-48V1.25 Temp 1 Channel with Temperature Monitor

Should one of the RPS power supplies fail, an alarm interface directs the iPECS telephone system to alert staff of a power disruption. Using an audible alarm programmable by extension and an email alert, you will always be informed of the system readiness.

Often the system is located in the IT Room. To ensure proper operation of all data equipment, the proper environment is critical. Too much heat in a confined space can damage communications and data gear. Now you can monitor for the presence of excessive temperatures in that space by adding the Programmable Temperature Alert Module to the RPS system. Like a power supply failure, a power supply failure, a high or low temperature condition will signal an alarm through the iPECS phone system.

Ordering Information:

RPS-48V1.25 1 Channel

RPS-48V2.5 2 Channel

RPS-48V1.25 Temp 1 Channel with Temperature Monitor

1U-GWM-RPS-PKG 1 RPS-48V1.25 plus 3 1U-GWM Mounts



1U-GWM-RPS-PKG 1 RPS-48V1.25 plus 3 1U-GWM Mounts

RACK MOUNT PoE INJECTOR

POE-INJ-1000-16-1U

Gigabit 16 Port Rack mount POE Injector

- Power 16 Gigabit devices from one power supply 12V to 56V



PoE-INJ-1000-16-1U

*Requires external power supply or RPS

SW8-POE-PLUS AND SW8-G-POE-PLUS

- Accepts dual voltages - can operate 24V and 48V devices
- 18W per port with a 48V 120W supply (power supply additional)
- All 7 PoE ports can supply up to 1 Amp of power per port.
- Ideal For high current devices such as cameras with heater elements, Wi-Fi Access Points and large VoIP Phones.

- One PoE port can pass through up to 1.25 Amps of PoE power to a second switch using only a standard CAT5 cable and that switch's uplink port.
- Redundant power supply inputs allow for two supplies for increased capacity and/or redundant failover.
- 8 Port 10/100 PoE Switch with 7 PoE and 1 Uplink Port
- Optional 19" rack mount for single or dual installations (SW8-RM)

SM-8-RM Rack Mount Kit



For Sales Support Call 614.652.6509 or sales@pmpowerproducts.com

MOH-MP3 TUNER

The MOH-MP3 Digital Tuner will work with any PBX to provide FM radio, recorded content via USB or SD card memory and included custom programmed Message on Hold on the supplied SD card. The unit is offered in two configurations, MOH-MP3 Tuner is a 4 Function standalone Digital player unit with:

- Play Scan • Previous • Next • USB/FM/Auxiliary Modes • Fixed Antenna
- SD/MMC Card slot • Memory device with standard MOH loop included • USB port • Remote Control • 12V Power Adapter included • Cables



MOH-MP3 TUNER RM

Tuner Rack Mount provides a 1U rack mount faceplate for mounting the MOH-MP3 Tuner in a 19" Rack. The MOH-MP3 TUNER RACK MOUNT includes a long wire antenna to replace the fixed antenna as well as all the product and components included with the basic MOH-MP3 Tuner.

RING ALERT FXO/S

- FXO/FXS powered loud electronic ringer
- 2 distinct loudness levels • Built-in flashing lamp
- Ideal for use in extremely noisy areas and for the hearing impaired
- Small compact size easily mounts to wall



PoE-Wall-ES-G

PoE-WALL-ES-G Gigabit Injector for 802.3af 10/100/Gigabit PoE injector

Internal power supply
48 volts and 15 watts

Supports:

- IP telephones
- CCTV cameras
- Wi-Fi Access Points



VIS-A-RING OPTICAL RINGER

- Each unit includes 4 high intensity LEDs.
- Activate from any Telephone with Lamps. *
- Weatherproof ready for exterior mounting.
- Light colors: Red/Blue/Amber/Clear
- Operates on DC 12 VDC
- Power: 4W (1W/LED)
- Waterproof level: IP62
- Size: 5.5" L x 1.6" D x 1.2" W
- Power cable length: 24"
- 19 programmable lighting modes
- Supplied with PHONE and ALARM labels

* Requires optional Opt-a-Switch control module



OPT-A-SWITCH CONTROL MODULE



Provides Unique activation by any LED/Lamp illumination on host telephone. Place photo pick-up over any lamp to activate any device.

WI-FI RELAY

- WIFI enabled, remote control switch;
- Support AP/STA/AP+STA three network connections
- Support fast network configuration WPS
- Password authentication
- 1 relay output: normally open and normally closed ; 5 timer switch functions
- Control software supports five platforms: Windows, MAC, IOS, Android, Webpage.



- Dimensions: 3.35" L, 1.78 W, .91" H
- Operating Voltage: 5VDC, or 6-24VDC (dual input) • Power consumption: 2W typical 3W max
- Working Temp: -22 F to 185 F
- Max output 250VAC/10Amp
- Optional AC Relay 2x2 with remote monitoring and control of 2 AC outlets



AC RELAY 2X2

PAGING INTERFACE



TKTU9038213-PI Paging Interface

The IP-8004 page interface provides a cost effective solution for a paging interface for use in noisy or open areas. The IP-8004 PI allows remote paging over the WAN to an external amplifier or loud speaker.

Includes:

- IP terminal interface
- 3.5mm audio output
- 3.5mm 6' cable

IP-8004 LR PAGE

Provides both loud ringer and local paging anywhere on the WAN.

Includes:

- IP phone with integrated paging amplifier
- Includes Wall Speaker
- Power Supply

DIG LR PAGE

Provides both loud ringer and local paging anywhere on the WAN.

Includes:

- Digital Adapter with integrated paging amplifier
- Wall Speaker
- Power Supply

PoE TESTER

- Built-in 802.3af load
- DC voltages as low as 5V and currents below 10ma



WI-FI TEMP

- Monitor temp and humidity remotely via the included application running on PC, MAC, Android or iOS platform
- Temp range -40 – 80 degree C
- Humidity Range: 0-99.9% RH
- 6-24 VDC (Power supplied)
- Dimensions: 3.39" L, 3.39" W, 1.10" D



WIT-GDC CHARGER

Charger for WIT and GDC handsets.

- Holds 1 WIT or GDC battery
- Backup battery for longer talk time



Tel-A-Control

Remote Control Board
Single FXO or FXS Phone interface
2 independent relays with

- Timed Closure
- 4 modes per relay
- Password protection
- 12V DC PS included



Quikcable R2

Installation Cable Rev 2

- 5' with 25 pair male connector
- 3 RJ45S and 8 RJ11 ends
- Terminates eMG80 and Summit digital boards



PoE AND POWER ADAPTERS



TP-POE-48-WP



TKSN9102211-T



PSM50A 12V



PS-48V 1.25A



PS-48V 2.5A

POE-INJ-G-15W

- 48 volts DC power supply included
- 15 Watts max power load
- + 48 volts on pins 4 and 5 return voltage on pins 7 and 8
- Gigabit data rates supported



10/100, POE-INJ-S

- 10/100 Shielded Passive PoE Injector, 3A
- Injects DC power on RJ45 socket pins 4,5 (+) and 7,8 (-). Shielded.
- Black. 24" DC Cable (5.5/2.1mm), 3A.150W



GIGABIT, POE-INJ-1000-S

- Gigabit PoE Injector with LED power indicator

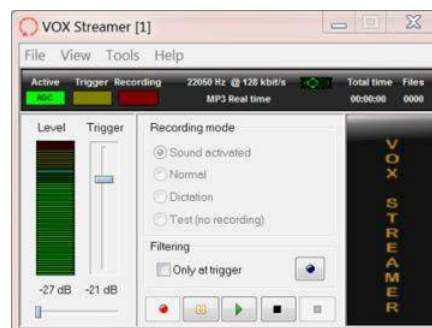




MULTI-PURPOSE SOLID STATE SOUND ACTIVATED RECORDER

VOX Streamer is the leading professional sound activated recorder with advanced trigger and filter settings for high quality audio recordings. Now with AGC (Automatic Gain Control) and a built in SPL (sound pressure level) meter to document noise levels over time! With multi-channel recording support, VOX Streamer supports up to 16 recording streams on one system.

- Robust and stable sound recording engine
- Flexible recording system
- Unique noise suppression system
- MP3 and WAV format
- Exclusive Dual recording formats
- Automatic gain control (AGC)
- Sound pressure level meter/logger
- Pre-recording digital filters
- Instant timer recording



VOX-USB PHONE

- USB CO Line Interface Module
- Allows recording of FXO/FXS lines

USB-TELCO-1-REC

- A stand alone single line recorder with supplied recording software.

PC-TELCO-1

- Telephone To Computer MP3 Call Recorder Adapter • Works with recording devices such as recording pen, MP3, MP4 mobile with record functions
- With the recorder software (included), all calls are saved as MP3 or wav format



MINI-UPS



24 Inch Deep Cabinets with Attached Swing Mount - Ships Fully Assembled



WME-6UD-SM-Z3



WME-9UD-SM-Z3



WME-12UD-SM-Z3



WME-15UD-SM-Z3



WME-18UD-SM-Z3

Common Features:

- 19 inch standard rack mount
- 13 inch standard rail depth, 18" maximum rail depth
- Welded frame
- 132 pound static loading max
- Front locking mesh door opens to 245 degrees
- Keys and locks for front door and side panels
- Cable entry at top cover and bottom panel

- Two fan mount locations on top, 4"x4"
- Optional Dual Fan Unit
- 1.2mm cold rolled steel

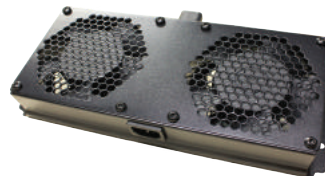
Compliance:

- ANSI/EIA RS-310
- IEC297
- DIN4149 PART7
- ETSI standard



WME-FAN

Dual Fan Kit for
27U/42U Cabinets



FME-FANS

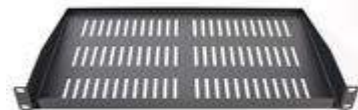
Dual 4" Fan Assembly
120VAC

WME-SHELF 10

10" 1U Vented Shelf

WME-SHELF 12

12" 1U Vented Shelf



1U-RACK FAN-TEMP

4 Unit Fan Assembly with
temp display and alert
110VAC



1U-RACK FAN

Same as above without temp display and alert



FME-DRAWER

Locking Sliding Keyboard
Drawer for 4-Post Cabinet



CONVENIENCE

Your business can allow for more flexible delivery schedules. Always know when deliveries are arriving at your lobby, warehouse or will call.



SECURITY

Ring provides a new level of security by notifying you when someone is on your property and letting you see and speak with anyone at your front door, will call or other access points.



MONITORING

No need to wonder if something is going on outside your business. See for yourself via built-in motion sensors, detect any activity on your property and trigger instant mobile alerts.

Features:

- Wi-Fi PCB that operates on a low voltage supply
- Motion sensors detect movement and trigger mobile alerts
- 1080P HD cameras
- Speakers and microphones with active noise cancellation
- Infrared LEDs provide clear visuals at any time of day
- Compatible with iPhone, iPad, Android devices, Mac and Win10 PC
- Sync an unlimited number of devices
- Optional Cloud Recording allows for footage to be accessed through smartphone, tablet or computer
- 4 interchangeable faceplates included with Pro Camera (Nickel, White, Black, and Bronze)
- 1 year limited hardware warranty



Ring Pro



Remote Access



Stick-Up CAM



Solar Panel



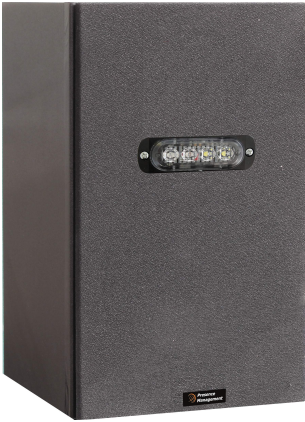
Chime

For Sales Support Call 614.652.6509 or sales@pmpowerproducts.com



The PA2-SPKR 6 and the VIS-A-RING SPKR 6 combine high quality audio wall mounted speakers with a built-in PA2 amplifier to provide paging for large areas or noisy environments.

Vis-A-Ring SPKR 6



SIP Based Optical Alerter / Loud Speaker.
Provides Loud Ringer, Voice Paging and Talk Back.

30 Watts @24VDC
Clear LED Programmable
Strobe
PoE Compatible.
(Supports SA-PAGE)
Includes "ALARM" and
"PHONE" Labels

PA2- SPKR 6



SIP BASED PAGING WALL SPEAKER.
6" SPEAKER CONE, 15 WATTS POE,
0 WATTS@12VDC/5A
WALL MOUNT INC. HIGH OUTPUT

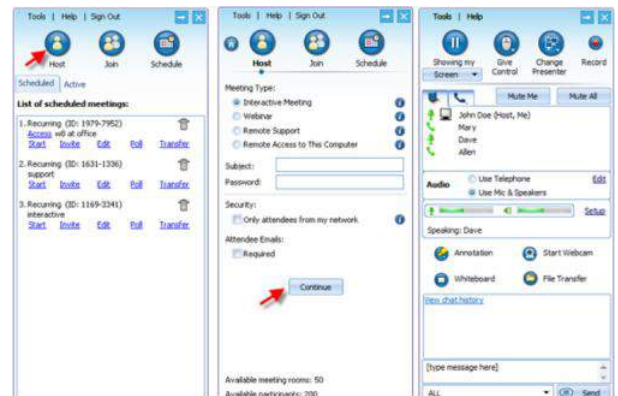


RHUB 6-in-1 Web Conferencing Servers

The RHUB server provides flexibility and value by embedding 6 outstanding real time collaborations and applications in 1 server.



1. **Web conferencing** – give sales presentations and product demos, and collaborate interactively
2. **Remote Support** – support PC and Mac users remotely
3. **Audio Conferencing** – VoIP based audio conferencing & free landline audio conferencing services
4. **Video Conferencing** – multi-point webcam based video conferencing
5. **Remote Access** – access your office or home PCs from anywhere anytime
6. **Webinar** – provide online seminars without download of any kind for view-only attendees



Main Entry Panel

Select a Meeting Type

Meeting Control Panel

For Sales Support Call 614.652.6509 or sales@pmpowerproducts.com

PM Power Products HS-LOUD SPKR



The HS-LOUD SPKR from PM Power Products provides a low-cost solution for interfacing telephones to create a loud ringer, and/or amplified signal over the supplied wall speaker.

The HS-LOUD SPKR can also be used as a pre-amp for connection to any paging system.

Specifications

- Loud ringer and amplified speaker
- Plugs into the headset jack port
- RJ9 connector
- Works with any phone that supports ring over the headset jack
- Digital, IP, SIP phone support
- Adjustable high gain amplifier
- Includes 12V power supply and wall speaker with 12 foot RCA cable
- Can be used as a pre-amp for paging systems using a dedicated basic SIP, digital or Ericsson-LG iPECS series IP phones

Operation

- Ensure the phone is set to headset ring
- Speaker volume adjustment is via the Adjustable Gain Potentiometer

Included

- HS-LOUD SPKR
- Wall Mount Speaker
- 12V power supply
- Telephone RJ9 Line cord
- 12 foot RCA cable



VIS-A-RING-SPKR

PM Power Products VIS-A-RING-SPKR Is A Multipurpose Signaling Device for Alerting and Telephone Systems

Specifications

VIS-A-RING-SPKR incorporates the following features:

- Programmable Loud Ringer offering multiple ringer sounds.
- Ultra Bright LED Visual Alert with multiple flash patterns (Programmable) which can be activated on Ring, Page or Both.
- Ring with Auto Answer Feature Allows Ringing then Audio Page.
- Remote Relay which can be Activated on Ring/Page or Both
- Talk Back Paging capability with On-Board 15 Watt Speaker and Supplied Microphone. Additional Speakers can be Supported through output jack with up to 30 Watts of Audio Power.
- Supports Multi-Cast Paging
- Supports SIP Extension Mode
- Supports Direct SIP Trunk Service allowing Direct Calls to the Device from an Outside Number (Available with PMPP Optional Secure Trunk)
- Industrialized Enclosure (Rated IP56)
- Low level Audio Output for connection to Paging Systems.
- Camera Port to allow viewing via compatible IP cameras.
- Input for Remote Activation of the Device via Contact Closure.
- PoE Supported and Includes 24VDC 3Amp Power Supply.



PM Power Products ATA SIP Gateway



Features

- Linux OS
- Supports SIP 2.0 (RFC3261) and correlative RFCs
- SIP supports 2 SIP servers, and Group servers
- Supports SIP UDP/TCP
- SIP support SIP domain, SIP authentication (none, basic, MD5), DNS name of server, Peer to Peer/ IP Call
- system led to indicate power/phone/register status
- Supports T.38 FAX
- Supports BY-PASS FAX
- FXS Port (1 Port for FX100S) and (2 Port for FX200S)
- Codec: G.711A/u, G.729AB, G.726-32
- Voice Activity Detection (VAD)
- Comfort Noise Generation (CNG)
- Background noise suppression
- Adaptive jitter buffers
- Packet loss concealment
- Different country tones
- SIP support SIP domain, SIP authentication (none, basic, MD5), DNS name of server, Peer to Peer/ IP call
- DTMF: Support SIP info, DTMF Relay, RFC2833
- IP application: support Call forward/transfer/holding/waiting
- Call control features: Flexible dial map, Hotline, Empty calling reject, Black list for reject authenticated call, limit call, No disturb, Caller ID.
- Support three way conference call

Network Features

- WAN / LAN: 10/100M Ethernet ports,
- Bridge mode and route
- PPPoE for xDSL
- VLAN (802.1Q/P)
- NAT (NAPT)
- NAT transverse :Support STUN client
- DHCP client on WAN/ DHCP server on LAN
- Main DNS and secondary DNS server
- DNS Relay
- NTP Client
- Firewall
- Web management access restricted
- VPN (L2TP/PTP)
- ping, tracer, telnet

Maintenance and Management

- WEB management
- Management with different account right
- Recover firmware and factory reset through Uboot
- Upgrade firmware via HTTP, HTTPS, FTP, TFTP
- DHCP option66 and custom option for auto provisioning
- Auto Provisioning to upgrade configuration file
- Syslog

Specification

Item		FX100S
Power Adapter		Input:100-240V
		Output:12V/0.5A
FXS Port		1 FXS Port
Port	WAN	10/100M Base-T RJ-45 for WAN
	LAN	10/100M Base-T RJ-45 for PC
Power Consumption		IDLE: 2.5W Active: 2.8W
Operation Temperature		0-40°C
Relative Humidity		10-65%
Flash		16Mbits
SDRAM		64Mbits



On-A-Call™ On-Line Status Indicator

On-A-Call™, when used in conjunction with the Opt-A-Switch™ contact relay, allows the user to provide a visual alert when the contact relay is of the On-A-Call™ is activated.

Placing the Opt-A-Switch optical sensor over the target light source allows the operation the On-A-Call when the Opt-A-Switch is activated.



Light Sensor with Adhesive Backing



PAD Attached to Line Appearance



The On-A-Call lamp illuminates to indicate the user station is in use. The On-A-Call lamp can be used in any scenario where a user may be using a headset and needs to indicate to others they are not available to talk. Users could be attendants, admin persons, call center agents, on air personalities, or any other users.

A high/low power setting is available for the lamp via a toggle on the side of the unit.

Optional extended length cables are available in 3, 6 and 9 foot lengths.

A 3 foot cable is shipped with the each On-A-Call kit.

Ruggedized Tamper Resistant SIP Intercom

SI-I12 SIP Intercom

The i12 IP Intercom is a ruggedized SIP intercom with a front plate made from an aluminum alloy material and a cast aluminum back plate. The i12 SIP Intercom is waterproof, dustproof and IP65 certified. Built-in tamper detection assists with maintaining the integrity of the unit.

Highlights

- Supports one call button
- Record voice and video to DVR
- Two inputs to support connections to sensors or relays
- External voice output speaker with G722 HD voice and background music
- Compatible with Ericsson-LG iPECS, Asterisk, 3CX, Metaswitch, Elastix, Avaya, etc.



Generic

- 2 SIP Lines
- Full Duplex Speaker Phone
- Intelligent Speed Dial (DSS)
- Wall mount installation
- 2 imbedded short circuit input interfaces
- 2 imbedded short circuit output interfaces. Support 4 controlled events: remote DTMF, remote server commands, interaction with short circuit input, talk status
- Output interface for active speaker
- Audio record output interface
- External power supply
- Multicast
- All in One: Radio and intercom, intelligent security function
- Industrial Security Certifications: IP65, IK10, CE/FCC

Call Features

- Intercom
- Speed Dial
- Auto Answer (per line)
- Voice message (no server)
- Local 3-way conference

Intercom Function

- Call log (900 entries; in/out/missed)
- Programmable DSS/Soft keys
- Network Time Synchronization
- Action URL/Active URI

Audio

- Narrow band Codec: G.711a/u, G723.1, G.726-32K, G729AB
- Wideband Codec: G722
- Full Duplex Acoustic Echo Cancellation (AEC) Hands-free mode, 96ms tail length
- Voice Activity Detection (VAD) / Comfort Noise Generation (CNG) / Background Noise Elimination (BNE)
- Packet Loss Concealment
- Dynamic Adaptive Jitter Buffer up to 300ms
- DTMF: In-Band, Out-of-Band – DTMF Relay (RFC2833) / SIP INFO
- Omnidirectional pickup: up to 5 meters or 16.5 feet

Networking

- Physical: 10/100 Ethernet
- IP Configuration: Static, DHCP, PPoE
- Network Access Control: 802.1x
- VPV: L2TP (Basic Unencrypted), Open VPN
- VLAN
- QoS

Deployment and Maintenance

- Auto provisioning via FTP/TFTP/HTTP/HTTPS/DHCP OTP66/SIP
- Web Management Portal
- Web-based packet dump
- Configuration Export/Import
- Firmware Upgrade
- Syslog

Protocols

- SIP 2.0 over UDP/TCP/TLS
- RTP/RTCP/SRTP
- STUN
- DHCP
- LLDP
- PPPoE
- 802.1x
- L2TP
- OpenVPN
- SNTP
- FTP/TFTP
- HTTP/HTTPS
- TR-069

Physical Specifications

- 1 DSS key (Speed Dial)
- RJ45 Ethernet Connection x2, Network x1, PC x1 (Bridge to network)
- Main Chipset: Broadcom
- Passive Switch: normally open or normally closed at 30V/1A AC/DC
- Output interface for active speaker
- Audio record output interface
- 2 imbedded short circuit input interfaces
- 2 imbedded short circuit output interfaces
- Speaker: 3W/4Ω
- Cable: Cat5 or better
- Power supply: 10~14V/1.5A DC or PoE
- Shell material: Front plate – aluminum alloy; back plate – cast aluminum
- Protection level: IP65, IK10
- Working temperature: -40° to 158°F
- Storage temperature: -40° to 158°F
- Working humidity: 10 to 90% non-condensing
- Overall dimensions: 7.6 x 4.75 x 1.5 inches (HxWxD)
- Package dimensions: 10.25 x 6.5 x 2.5 inches (HxWxD)
- Package weight: 1.8Lb

The above specifications may be updated in the future without prior notice. All hardware/software/physical features should be based on the final shipped products.
For more information, please visit: www.pmpowerproducts.com

Compatibility List:



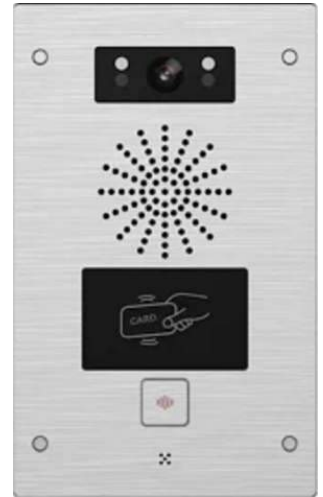


SVDP-I32V SIP Video Door Phone

The SVDP-I32V SIP Video Door Phone is designed for outdoor scenes with high reliability, HD Audio/Video and IP65/IK10 grade protection. The SVDP-I32V combines access control, security, audio/video intercom and broadcasting functionalities for smooth, safe and clear communication.

Highlights

- Built in HD camera with Infrared night vision, H.264 CODEC
- Access control (by call, RFID/IC, card and indoor switch)
- HD voice speech quality with built in 3W speaker and Acoustic Echo Cancellation (AEC)
- IP65 waterproof and dustproof
- IK10 anti-collision with robust die-cast aluminum frame
- -40° to 158° wide range temperature adaptability
- Online management and upgrade support
- Compatible with Ericsson-LG iPECS, Asterisk, 3CX, Metaswitch, Elastix, Avaya, etc.



Generic

- 2 SIP Lines
- Full Duplex Handsfree
- Intelligent Speed Dial (DSS)
- Auto Answer
- Intercom Function
- Industrial Security Certifications: IP65, IK10, CE/FCC

Access Control Function

- Unlock door method: DTMF, RFID/IC card, indoor switch, WEB page
- 2000 Remote Access List
- 2000 RFID/IC cards
- 200,000 door open records
- Electric lock internal and external power supply options
- Dynamic multicast function
- ONVIF support
- Customized DSS keys support
- Network Time Synchronization
- Action URL/Active URI

Audio

- Narrow band Codec: G.711a/u, G.723.1, G.726-32K, G.729AB
- Wideband Codec: G.722
- Full Duplex Acoustic Echo Cancellation (AEC) Hands-free mode, 96ms tail length
- Voice Activity Detection (VAD) / Comfort Noise Generation (CNG) / Background Noise Elimination (BNE)
- Packet Loss Concealment
- Dynamic Adaptive Jitter Buffer up to 300ms
- DTMF: In-Band, Out-of-Band – DTMF Relay (RFC2833) / SIP INFO

Video

- Sensor: 1/2 .7 color CMOS
- 2 Megapixels
- Video CODEC H.264
- Resolution:
Main Stream 1280 x 720@25fps
Sub-stream 704 x 576 (D1) @25fps
- Viewing angle: 112° (H), 84° (V)
- Minimum illumination: 0.1lux, support for infrared illumination

Networking

- Physical: 10/100 Ethernet
- IP Configuration: Static, DHCP, PPoE
- Network Access Control: 802.1x
- VPN: L2TP (Basic Unencrypted), Open VPN
- VLAN
- LLDP

Protocols

- SIP 2.0 over UDP/TCP/TLS
- RTP/RTCP/SRTP
- STUN
- DHCP
- LLDP
- PPPoE
- 802.1x
- L2TP
- OpenVPN
- SNTP
- FTP/TFTP
- HTTP/HTTPS
- TR-069

Deployment and Maintenance

- Auto provisioning via FTP/TFTP/HTTP/HTTPS/DHCP
OTP66/SIP
- Web Management Portal
- Web-based packet dump
- Configuration Export/Import
- Firmware Upgrade
- Syslog

Physical Specifications

- 1 DSS button (Speed Dial)
- 1 RJ45 port
- 1 Wiegand port
- 1 audio output interface
- 1 recording output interface
- 2 imbedded short circuit input interfaces
- 2 relays: max DC30V / 2A, AC125V / 0.5A
- Active switching output; 12V / 500mA DC (only 1 relay support)
- 2 door magnetic detection interface
- 1 tamper alarm switch
- RFID reader: ID (EM4100, 125KHz) & IC (MIFARE ONE, 13.56MHz),
- Power supply: DC12V/1A or PoE
- Housing material: aluminum alloy shell
- Protection level: IP65, IK10
- Installation: wall mounting
- Working temperature: -40° to 158°F
- Storage temperature: -40° to 158°F
- Relative humidity: 10 to 90% non-condensing
- Overall dimensions: 7.6 x 4.75 x 1.5 inches (HxWxD)
- Package dimensions: 10.25 x 6.5 x 2.5 inches (HxWxD)
- Package weight: 2.23Lb

The above specifications may be updated in the future without prior notice. All hardware/software/physical features should be based on the final shipped products.
For more information, please visit: www.pmpowerproducts.com

Compatibility List:

